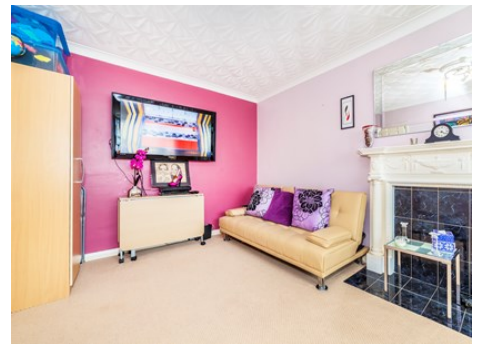


Truuli



Ford Court, Ross Road, London, SE25

£230,000 Share of Freehold

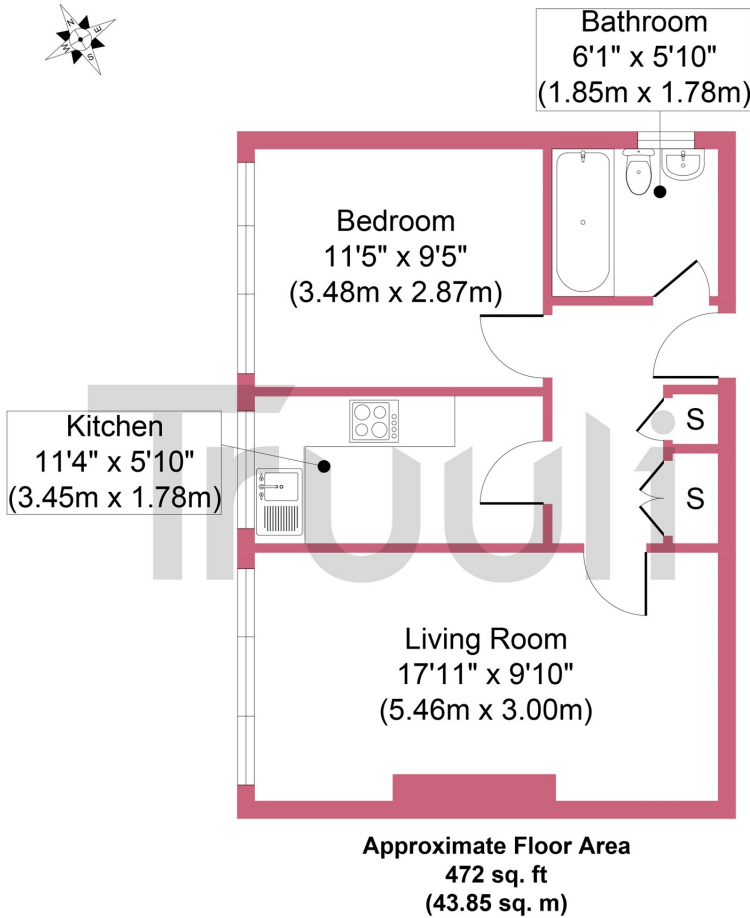
- Long lease
- Communal gardens
- Ample storage space
- Period features
- Garage
- First floor

Ford Court, Ross Road, London, SE25

£230,000 Share of Freehold

Presented to the market in excellent order throughout is this well presented first floor flat, situated in a sought after residential location within close proximity of Norwood Junction train station. Offering spacious accommodation, the bright and airy flat affords a variety of attributes, briefly comprising; a large reception room with feature fire place, well presented kitchen with a range of floor & wall mounted units and a three piece bathroom suite - both the kitchen and bathroom have been recently fitted. Further benefits of the property include large communal gardens, garage, double glazing, central heating, an approximate 900-year lease and a share in the management company that owns the freehold.

Ford Court, London, SE25



Whilst every attempt has been made to ensure the accuracy of the floor plan contained here, measurements of doors, windows and rooms are approximate and no responsibility is taken for any error, omission or misstatement. These plans are for representation purposes only as defined by RICS Code of Measuring Practice and should be used as such by any prospective purchaser. Specifically, no guarantee is given on the total square footage of the property if quoted on this plan. Any figure given is for initial guidance.

Energy Efficiency Rating		Environmental Impact (CO ₂) Rating	
Current	Potential	Current	Potential
<p>Very energy efficient - lower running costs</p> <p>(92 to 100) A</p> <p>(81 to 91) B</p> <p>(69 to 80) C</p> <p>(55 to 68) D</p> <p>(39 to 54) E</p> <p>(21 to 38) F</p> <p>(1 to 20) G</p> <p>Not energy efficient - higher running costs</p>		<p>Very environmentally friendly - lower CO₂ emissions</p> <p>(92 to 100) A</p> <p>(81 to 91) B</p> <p>(69 to 80) C</p> <p>(55 to 68) D</p> <p>(39 to 54) E</p> <p>(21 to 38) F</p> <p>(1 to 20) G</p> <p>Not environmentally friendly - higher CO₂ emissions</p>	
	76	68	55
EU Directive 2002/91/EC		EU Directive 2002/91/EC	
England, Wales & N.Ireland		England, Wales & N.Ireland	

