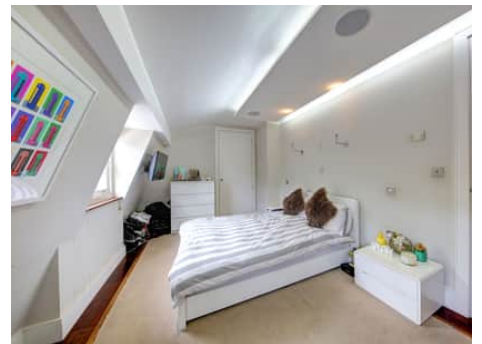


# Truuli



## Upper Tulse Hill, London, SW2

£350,000 Leasehold

- Close to the Green open spaces of Brockwell Park
- Easy access of Tulse Hill station
- Well maintained and modern decor throughout
- Bright and airy flat
- Two double bedrooms
- Parking available

2, Lansdowne Road, Croydon, Surrey, CR9 2ER

Tel: 0330 043 0002

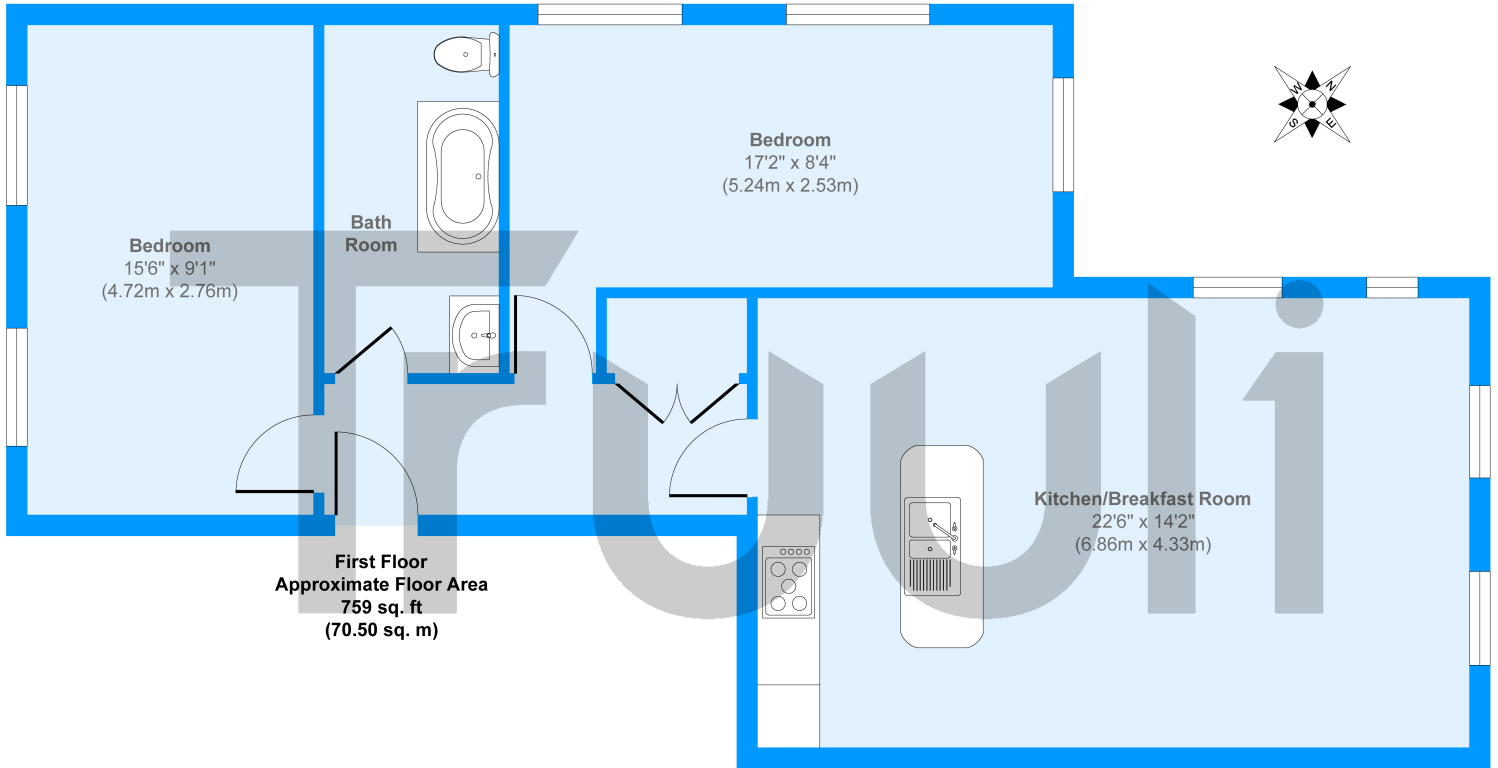
Email: [save@truuli.co.uk](mailto:save@truuli.co.uk) Web: [www.truuli.co.uk](http://www.truuli.co.uk)

# Upper Tulse Hill, London, SW2

£350,000 Leasehold

A bright and airy flat, located on Upper Tulse hill that is close to the train station. The property is well maintained and ready to be moved into by the new owners.

## Upper Tulse Hill



Approx. Gross Internal Floor Area 759 sq. ft / 70.50 sq. m

Produced by Elements Property

