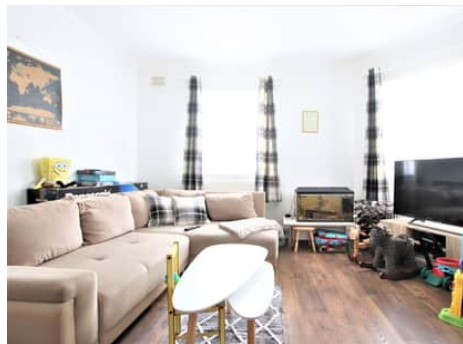


# Truuli



## Percy Road, London, SE25

£1,250 pcm Not Applicable

- Gas central heating & double glazing
- Private Garden
- Separate Kitchen
- Available immediately
- Presented part-furnished
- Close proximity of Norwood Junction train stations and local amenities
- Stunning ground floor one bedroom flat
- Well - presented throughout

2, Lansdowne Road, Croydon, London, CR9 2ER

Tel: 0330 043 0002

Email: [save@truuli.co.uk](mailto:save@truuli.co.uk) Web: [www.truuli.co.uk](http://www.truuli.co.uk)

# Percy Road, London, SE25

£1,250 pcm Not Applicable


A stunning one-bedroom ground-floor maisonette on a quiet residential road Percy Road, Norwood Junction is available to occupy

The spacious apartment is well presented with an abundance of natural light throughout. The accommodation comprises one large bedroom with built-in storage space, a separate integrated kitchen with access to a private garden with a shed, a modern style three-piece bathroom suite and a large double reception with a dining area.

Further benefits include ample storage, gas central heating and wooden floors throughout.

The flat is close to local amenities and Norwood Junction train station, offering fast and convenient travel services into London Bridge or Victoria within 15 minutes commute.

This property is ready to view and rent by the end of September 2022.

Energy Efficiency Rating		
	Current	Potential
<i>Very energy efficient - lower running costs</i>		
(92-100) <b>A</b>		
(81-91) <b>B</b>		
(69-80) <b>C</b>	70	77
(55-68) <b>D</b>		
(39-54) <b>E</b>		
(21-38) <b>F</b>		
(1-20) <b>G</b>		
<i>Not energy efficient - higher running costs</i>		
EU Directive 2002/91/EC 		
England, Scotland & Wales		

