

Truuli



Sydenham Road, Croydon, Surrey, CR0

£1,600 pcm Leasehold

- Two bedroom ground floor flat
- Good condition throughout
- Close to transport & all local amenities
- Modern fitted kitchen
- Large open plan living area
- Modern fitted shower room
- Large private rear garden
- Unfurnished
- EPC Rating: C
- Off street allocated parking

2, Lansdowne Road, Croydon, Surrey, CR9 2ER

Tel: 0330 043 0002

Email: save@truuli.co.uk Web: www.truuli.co.uk

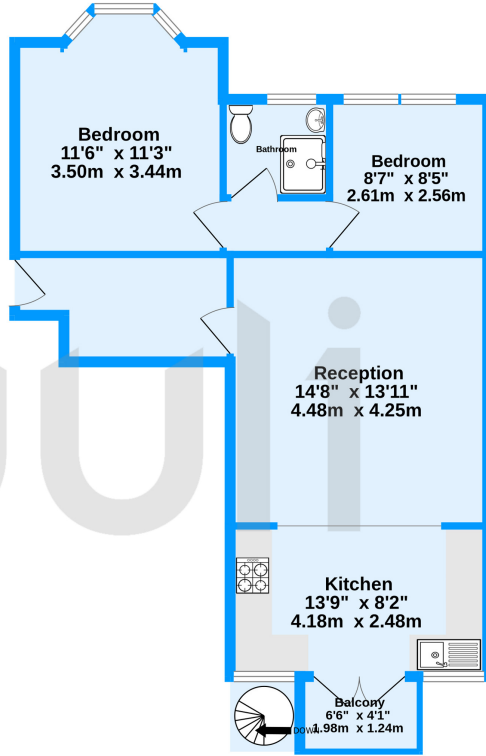
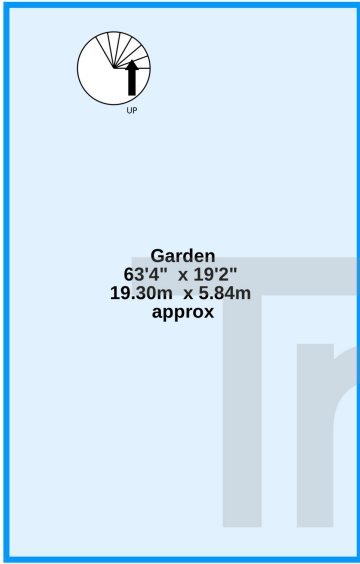
Sydenham Road, Croydon, Surrey, CR02ET

£1,600 pcm Leasehold

A well presented two bedroom garden flat close to transport and all local amenities.

Garden
0 sq.ft. (0.0 sq.m.) approx.

Ground Floor
638 sq.ft. (59.2 sq.m.) approx.



239 Sydenham Road, Croydon, CR0

TOTAL FLOOR AREA : 638 sq.ft. (59.2 sq.m.) approx.
Measurements are approximate. Not to scale. Illustrative purposes only
Made with Metropix ©2023

Energy Efficiency Rating		Current	Potential
Very energy efficient - lower running costs			
(92-100)	A		
(81-91)	B		
(69-80)	C	76	80
(55-68)	D		
(39-54)	E		
(21-38)	F		
(1-20)	G		
Not energy efficient - higher running costs			
England, Scotland & Wales		EU Directive 2002/91/EC	

