

Truuli



St Saviours Road, Croydon, Surrey, CR0 2XF

£550,000 Freehold (to be confirmed)

- Semi - detached
- Victorian family home
- Modern and stylish decor throughout
- Upstairs bathroom and downstairs WC
- Private gardens
- Useable cellar for storage
- No onward chain

Southbridge Place, Croydon, Surrey, CR0 4HA

Tel: 0330 043 0002

Email: save@truuli.co.uk Web: www.truuli.co.uk

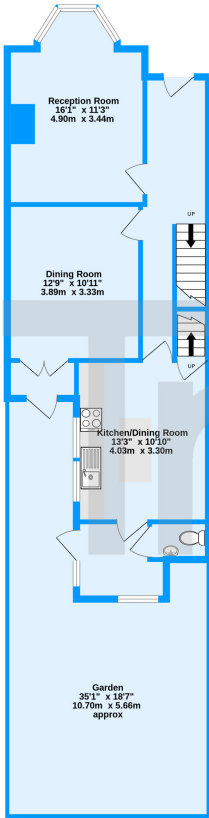
St Saviours Road, Croydon, Surrey, CR0 2XF

£550,000 Freehold (to be confirmed)

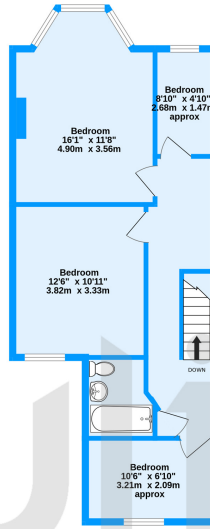
This fantastic end-terrace Victorian home seamlessly blends period charm with modern decor. It is within walking distance of West Croydon station, which offers transport links into London, excellent schools, and nearby local amenities.

This superb property comprises four bedrooms and an upstairs bathroom. The property also features two inviting reception rooms, perfect for family living or entertaining.

Ground Floor
638 sq.ft. (59.2 sq.m.) approx.



1st Floor
576 sq.ft. (53.5 sq.m.) approx.



St Saviours Road, Croydon, CR0
TOTAL FLOOR AREA : 1214 sq.ft. (112.8 sq.m.) approx.
Measurements are approximate. Not to scale. Illustrative purposes only
Made with Mergoix ©2024

Energy Efficiency Rating		Current	Potential
Very energy efficient - lower running costs			
(92+)	A		
(81-91)	B		83
(69-80)	C		
(55-68)	D	60	
(39-54)	E		
(21-38)	F		
(1-20)	G		
Not energy efficient - higher running costs			
England, Scotland & Wales		EU Directive 2002/91/EC	

