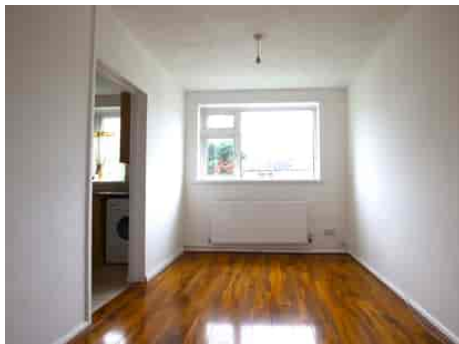


# Truuli



## Woodvale Court, South Norwood Hill, London, SE25 6AH

£2,000 pcm Leasehold

- Three bedroom maisonette
- Light and airy feel throughout
- Newly refurbished throughout
- Available immediately
- Presented unfurnished
- Double glazing & gas central heating
- Parking available for six cars
- Communal garden areas
- Close proximity of Norwood Junction train stations and local amenities

Southbridge Place, Surrey, CR0 4HA

Tel: 0330 043 0002

Email: [save@truuli.co.uk](mailto:save@truuli.co.uk) Web: [www.truuli.co.uk](http://www.truuli.co.uk)

# Woodvale Court, South Norwood Hill, London, SE25 6AH

£2,000 pcm Leasehold

This well-presented, newly decorated three-bedroom maisonette on Woodvale Court, South Norwood Hills, is available immediately to rent.

Energy Efficiency Rating		
	Current	Potential
Very energy efficient - lower running costs		
(92+) <b>A</b>		
(81-91) <b>B</b>		
(69-80) <b>C</b>	71	74
(55-68) <b>D</b>		
(39-54) <b>E</b>		
(21-38) <b>F</b>		
(1-20) <b>G</b>		
Not energy efficient - higher running costs		
England, Scotland & Wales		
EU Directive 2002/91/EC		

