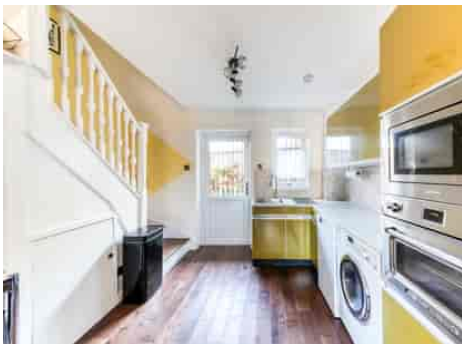


Truuli



Bradshaws Close, London, SE25 4EN

£325,000 Freehold

- Allocated off street parking
- One bedroom starter home
- Freehold
- Easy access of Norwood Junction mainline station
- Private courtyard garden
- No onward chain
- Solar panels on the roof

Southbridge Place, Surrey, CR0 4HA

Tel: 0330 043 0002

Email: save@truuli.co.uk Web: www.truuli.co.uk

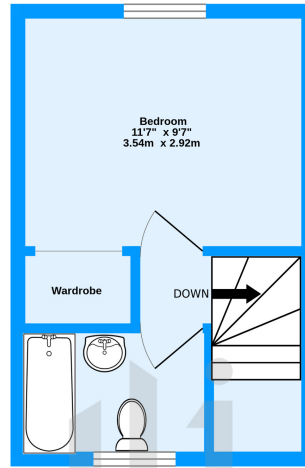
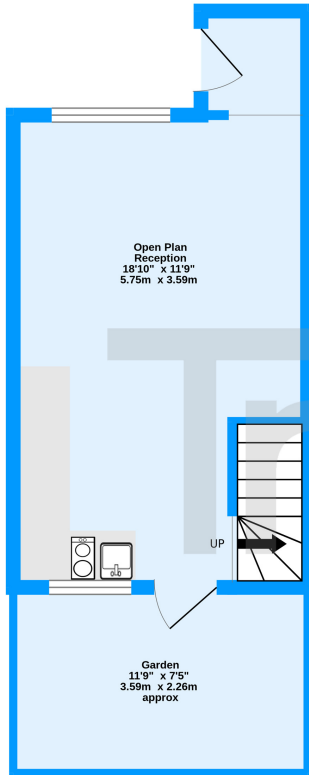
Bradshaws Close, London, SE25 4EN

£325,000 Freehold

Welcome to this delightful one-bedroom freehold terraced house nestled in the peaceful community of Bradshaws Close, Upper Norwood.

Ground Floor
239 sq.ft. (22.2 sq.m.) approx.

1st Floor
208 sq.ft. (19.3 sq.m.) approx.



Bradshaw Close, London, SE25

TOTAL FLOOR AREA: 447 sq.ft. (41.6 sq.m.) approx.
Measurements are approximate. Not to scale. Illustrative purposes only
Made with Metropix ©2024

Energy Efficiency Rating		Current	Potential
Very energy efficient - lower running costs			
(92+)	A		92
(81-91)	B		
(69-80)	C	82	
(55-68)	D		
(39-54)	E		
(21-38)	F		
(1-20)	G		
Not energy efficient - higher running costs			
England, Scotland & Wales		EU Directive 2002/91/EC	

